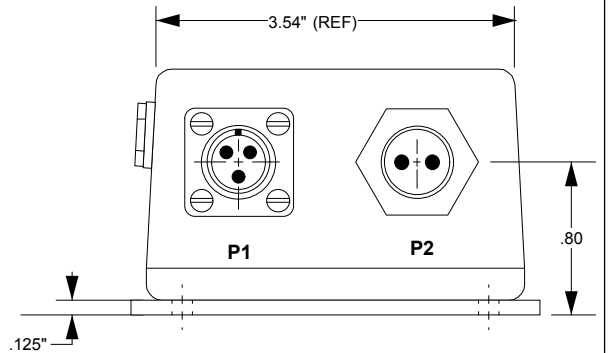
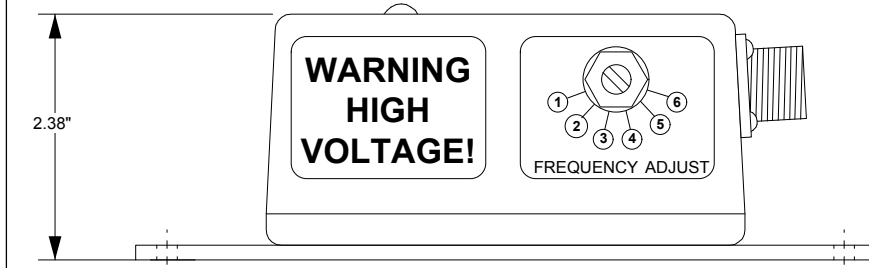
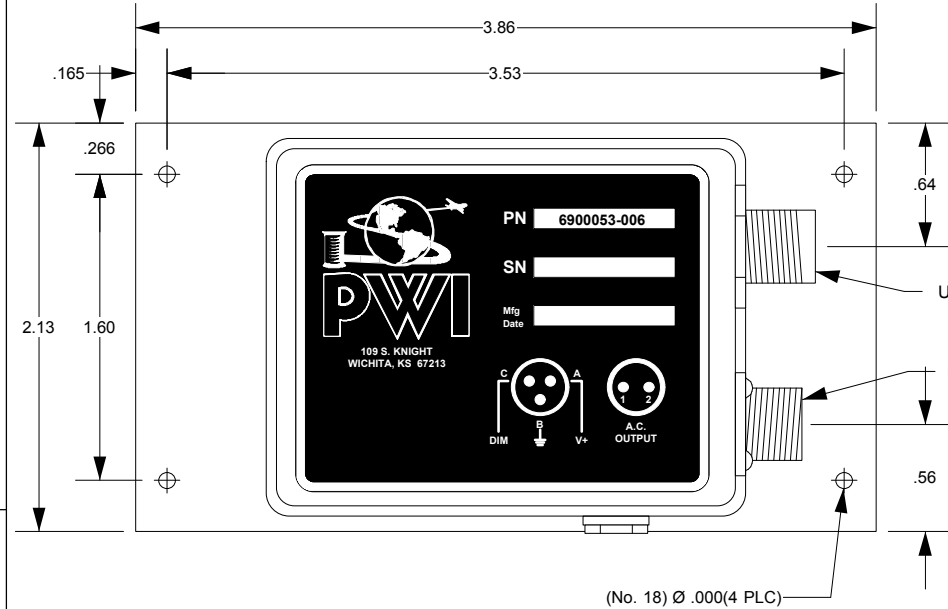


APPLICATION	
NEXT ASSY	USED ON
-	-

REVISION HISTORY

REV	DESCRIPTION	DATE	APPROVED
-----	-------------	------	----------



Note:

1. THIS UNIT SUPERSEDES PW-28S-30CC-8, 6900002 AND PW6900002.
2. 6900053-006 IS A PHYSICAL REPLACEMENT FOR THE 6900002-000 UNIT. WHEN REPLACING AN OLD POWER SUPPLY (6900020-000) THAT IS CURRENTLY INSTALLED ON ANY AIRCRAFT, SEE INSTALLATION GUIDE 1500001-000.

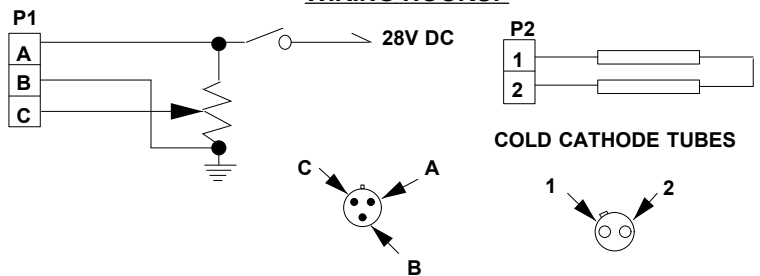
INSTALLATION GUIDE:

- A. Power Supply Should Be Mounted In An Area With Adequate Convection Cooling And Where Structure Will Provide A Good Heat Sink.
- B. Use Unshielded Wire From Power Supply To Lamp. Power And Dimming Wires Do Not Require Shielding.
- C. Lamp Should Be Mounted No Closer than .5" Away From A Continuous Ground Plane.

Tol:

.XX = +/- .030"
.XXX = +/- .010"

WIRING HOOKUP



Ordering Part No. : 6900053-006

MATERIAL: --	ISSUED BY	W.A.S.	2/1/07	SIZE	FSCM NO.	DRAWING NO.	REV
	DRAWN BY	J. Dawley	2/7/07	A	33497	6900053-006	A
	CHECKED BY	W.A.S.	3/1/07	SCALE	EST. WGT	SHEET	OF
	APPRD BY	W.A.S.	3/1/07	1:2	-	3	7
CAD FILE NAME				6900053-006A_Customer v12.mcd			

APPLICATION

NEXT ASSY

USED ON

REVISION HISTORY

REV

DESCRIPTION

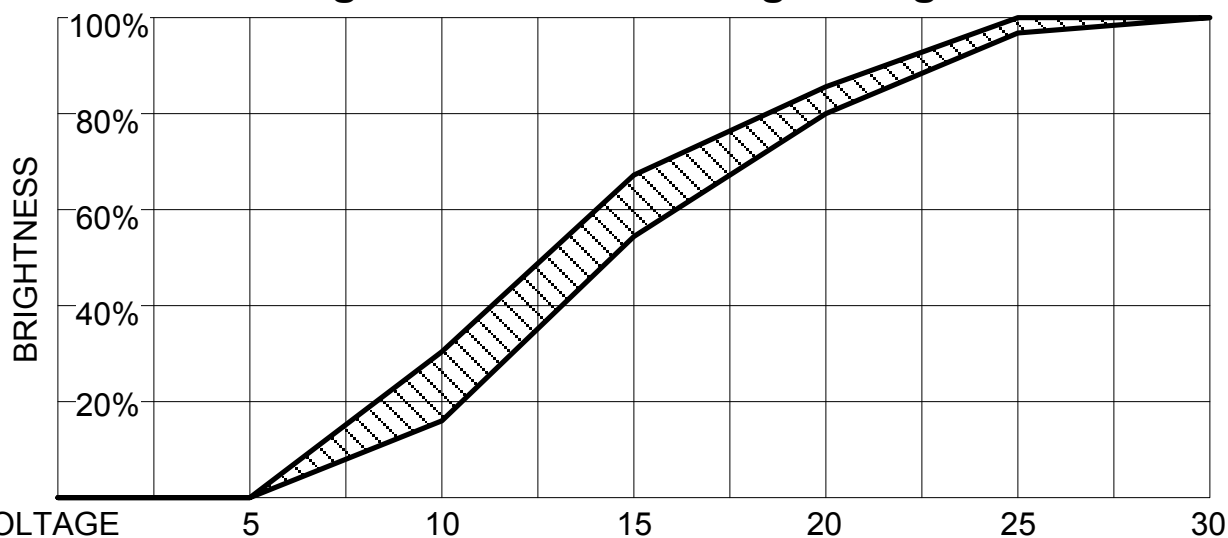
DATE

APPROVED

Electrical Specifications:

Specifications	MIN.	Typ.	Max.	Units
Supply voltage	16	28	33	Vdc
Supply Current	0.2	-	2	Amps
Dimming Input Voltage	0	-	28	Vdc
Dimming Input Resistance	-	50K	-	Ohms
Ambient Temperature	-25	-	+55	Cent.
Temperature Rise (No heat sink)	-	+30	+45	Cent.
Heat Disapation	-	5	7	Watts
Weight	-	845	-	Grams
Output Short Circuit Duration	-	Countinous	-	
Output Current	0	-	15	mA
Electrical Lamp Length	0	-	16	Ft.
Output Voltage (Per E.L.L.)	-	144	-	Vrms/Ft.
Output Cross Coupling to Ground	-	-	300	pf
Output Cross Coupling to other 40CC Output	-	-	300	pf
Output Open Circuit Shut Down Time	10	-	60	Sec.

Operating Frequencies: 1754, 1814, 1879, 1937, 2000, 2062, Hertz +/- 2% at 20* C

Brightness vs. Dimming Voltage:

* E.L.L. (Electrical Lamp Length) is best calculated by finding the total physical length of a lamp and adding 6 inches.

MATERIAL: --	ISSUED BY	W.A.S.	2/1/07	SIZE	FSCM NO.	DRAWING NO.	REV
	DRAWN BY	J. Dawley	2/7/07	A	33497	6900053-006	A
	CHECKED BY	W.A.S.	3/1/07	SCALE	EST. WGT	SHEET	OF
	APPRD BY	W.A.S.	3/1/07	1:1	-	4	7
CAD FILE NAME				6900053-006A_Customer v12.mcd			